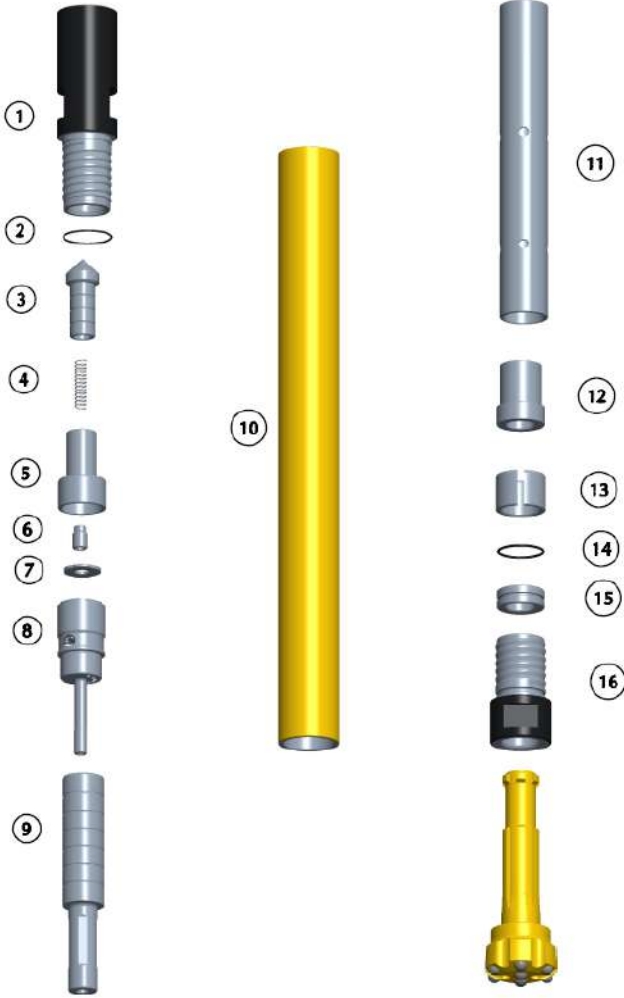




# KGR BR2 HAMMER



Item	Part Number	Description	Wt in Kgs
	<b>KGRBR2AS01</b>	<b>KGR-BR2 (RD50-6 BOX)</b>	<b>13.2</b>
1	KBR2TS01	Top Sub (RD50-6 BOX)	2.4
2	KBR2OR01	"O" Ring For Top sub	
3	KBR2CV01	Check Valve	
4	KBR2SG01	Spring	
5	KBR2TV01	Top Valve	0.3
6	KBR2VC01	Valve Centralizer	
7	KBR2RV01	Rocker Valve	
8	KBR2BV01	Bottom Valve	1.0
9	KBR2PS01	Piston	1.7
10	KBR2WS01	Wear Sleeve	4.9
11	KBR2LR01	Liner	1.0
12	KBR2GB01	Guide Bush	0.4
13	KBR2SB01	Spilt Bush	0.2
14	KBR2OR02	"O" Ring For Bit Retainer Ring	
15	KBR2BR01	Bit Retainer Ring	0.14
16	KBR2FC01	Front Chuck	1.1
Service Kit(Item 2,4&15)			

Specifications	Metric	Imperial
Hammer Outside Diameter	62mm	2.44"
Hammer Length (Without Bit, Top Sub to Front Chuck)	810mm	31.89"
Hammer Weight (Without Bit)	13.2Kg	29.1lbs
Drill Bit Shank Type	BR2	
Drill Bit Hole Size	70mm-80mm	2.75"-3.14"
Piston Weight	1.75 Kg	3.85"Lbs
Piston Stroke	85mm Approx.	3.34" Approx.
Top Sub Spanner Flat Size	48mm A/F	1.89" A/F

## BR2 Air Consumption, CFM

PSI	150	200	250	300
CFM	180	230	320	420