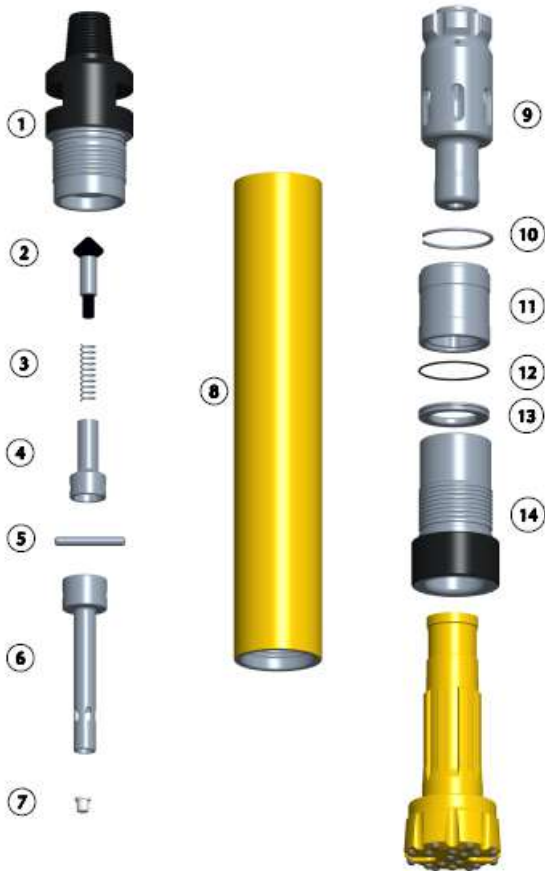




# KGR SD6 HAMMER



Item	Part Number	Description	Wt in Kgs
	<b>KSD6AS01</b>	<b>KGR-SD6 (3 1/2" A.P.I. Reg. Pin)</b>	<b>2</b>
1	KSD6TS01	Top Sub (3 1/2" A.P.I. Reg. Pin)	18.2
2	KSD6CV01	Check Valve	
3	KSD6SG01	Spring	
4	KSD6TV01	Top Valve	0.6
5	KSD6LP01	Lock Pin	
6	KSD6CT01	Control Tube	1.5
7	KSD6CK01	Choke	
8	KSD6WS01	Wear Sleeve	36.8
9	KSD6PS01	Piston	19
10	KSD6PR01	Piston Retainer Ring	
11	KSD6GB01	Guide Bush	4.75
12	KSD6OR01	Bit Retainer "O" Ring	
13	KSD6BR01	Bit Retainer Ring	0.8
14	KSD6FC01	Front Chuck	11.75
Service Kit(Item 2,3,7,&12)			

## Specifications

	Metric	Imperial
Hammer Outside Diameter	148mm	5.8"
Hammer Length (Without Bit, Top Sub to Front Chuck)	1023mm	40.27"
Hammer Weight (Without Bit)	94.7Kg	208.7Lbs
Drill Bit Shank Type	SD6	
Drill Bit Hole Size	165mm-203mm	6.5"-8"
Piston Weight	19 Kg	41.9"Lbs
Piston Stroke	90mm Approx.	3.54" Approx.
Top Sub Spanner Flat Size	90mm A/F	3.54" A/F

## SD6 Air Consumption, CFM

	150	200	250	300	350
PSI	150	200	250	300	350
CFM	360	580	820	1120	1380